

Location Portfolio

Film ESA





Lights, camera, liftoff!

The European Space Agency (ESA) is Europe's gateway to space.

It guides the development of Europe's space capability, and undertakes pioneering research in all areas of space activity.

For over 50 years, this multinational organisation and its predecessors have been shaping and sharing space, managing the programmes needed to keep Europe at the forefront of space exploration and applications, and ensuring that investment in space

delivers benefits to the citizens of Europe and the world.

ESA is now opening its doors to national and international film productions – offering its range of unique locations and backdrops for film, television, music and commercial crews.

With film-friendly sites spread across eight European countries and two continents, ESA locations hold infinite potential for film industry professionals looking for distinctive and authentic sets for their next high-quality production.



**ROCKET LAUNCHPADS
NEXT TO THE ATLANTIC OCEAN**
Europe's Spaceport, French Guiana



**SPRAWLING ANTENNA FARMS
IN THE BELGIAN ARDENNES**
ESA ESEC, Belgium



**ASTRONAUT TRAINING
FACILITIES AND SIMULATORS**
ESA EAC, Germany



**ULTRA-MODERN
MISSION CONTROL ROOMS**
ESA ESOC, Germany



**A VAST RANGE OF DIFFERENT
LOCATIONS ON ONE HUGE SITE**
ESA ESTEC, The Netherlands

Previous filming

at ESA



Snow Patrol in the Large European Acoustic Facility

ESA has welcomed a number of productions to its locations around the world, attracting a wide variety of shoots from Hollywood blockbuster movies to futuristic music videos.

Anna Winocour's feature film *Proxima* (2019), starring **Eva Green** as an astrophysicist and single mother selected for a year-long spaceflight, was shot partly on location at ESA EAC, the European Astronaut Centre, in Cologne. Winocour and her 60-strong crew used EAC's neutral buoyancy pool, training hall, simulators and Columbus mock-up as sets, as well as consulting with ESA researchers and astronauts to shape the story.



Where else could we go to film real space stuff but the European Space Agency?

Gary Lightbody, Snow Patrol

Wanting to create something "visceral and terrifying" for the audience, **Tom Cruise** filmed scenes for his Hollywood blockbuster *The Mummy* on board Novespace's Airbus A310 near Bordeaux in France. Shot over two days on the aircraft, the zero gravity scene provides one of the most impressive and exciting moments in the movie, released in June 2017. In a behind-the-scenes feature about the flight Cruise said: "To have this opportunity to do that in Zero G is just going to give an audience a different kind of emotional quality."

The ultra-modern nature of some of ESA's locations make the ideal backdrop for music videos. **Snow Patrol** shot the video for single 'Life on Earth', and publicity material for their 2018 chart-topping album *Wilderness*, in the Hertz Chamber and Large European Acoustic Facility at ESA



BBC series *Space Odyssey: Voyage to the Planets* filmed in the real Mission Control



Techno DJ and producer Lilly Palmer in the Hertz Chamber

YOU ARE MY GUIDE
LILLY PALMER

ESTEC in the Netherlands. Lead singer Gary Lightbody said, "Where else could we go to film real space stuff but the European Space Agency? Their facilities at ESTEC in the Netherlands gave us one of the best locations, all high tech and very atmospheric."

The high-tech Hertz chamber was also used by DJ and producer **Lilly Palmer**, a rising star on the global techno scene, who livestreamed a DJ set from its distinctive interior.

Meanwhile at ESA ESRIN, near Rome, award-winning Italian director/cinematographer **Daniele Cipri** used the enigmatic interiors of the Phi Experience and Data Centre for indie band **Marcondiro's** music video for their single 'Amati', which is about a love story between two robots.

“...To do that in Zero G is just going to give an audience a different kind of emotional quality.”

Tom Cruise

For television, BBC drama-documentary *Space Odyssey: Voyage to the Planets* filmed actors at the real Mission Control at ESA ESTEC, and used footage provided by ESA and NASA from the International Space Station. Another BBC series, **Simon Reeve's South America**, explored Europe's Spaceport in French Guiana, the home of European rocket launches. The Spaceport was also the backdrop for a space age fashion show in homage to late fashion designer **Pierre Cardin** in 2023.

Recognising the importance of film in bringing the ideas and themes of space to wider audiences, ESA provides grants to short films with a space theme in its **New Worlds Film Competition**.

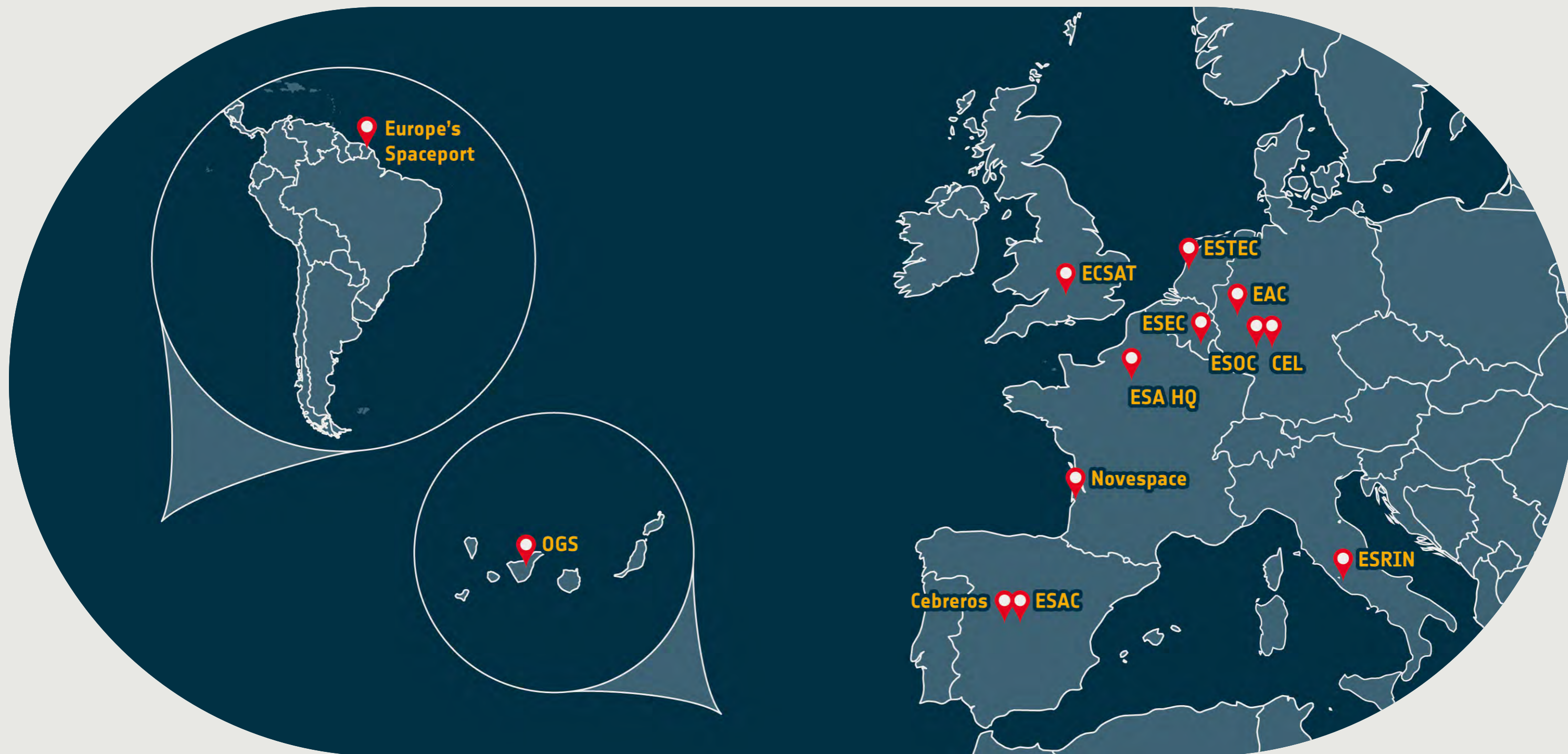


ISABELLE MADELAINE ET ÉMILIE TISNE
PRESENTENT

EVA GREEN MATT DILLON
PROXIMA

UN FILM DE
ALICE WINOCOUR

MUSIQUE DE RYUICHI SAKAMOTO
Avec ZÉLIE BOULANT-LEMESLE, ALEKSEY FATEEV, KARS EDINGER, SANDRA HÜLLER. SCÉNARIO ALICE WINOCOUR. AVEC LA COLLABORATION DE JEAN-STEPHANE BRON. MONTAGE GEORGES LECHAPUIS. COSTUMES PASCALINE CHAVARNE. MUSIQUE FLORIAN SANSON. MONTAGE JULIEN LACHERAY.
PIERRE-ANDRÉ VALÉRIE DELOOF, LAURE-ANNE DARRAS, MARC DOISNE. SCÉNARIO CÉCILE RODCARTS. ASSISTANT RÉALISATEUR NICOLAS GUILLEMINOT. RÉPÉTITION DE PRODUCTION THOMAS SANTUCCI. COPRODUCTEURS ARDAVAN SAFAEE, NINA THÈSE. RÉALITÉ PAR ISABELLE MADELAINE ET ÉMILIE TISNE.
UNE COPRODUCTION DHARANSALA, DARIUS FILMS, PATHE FRANCE 3 CINÉMA, PAUDORA FILM. AVEC LA PARTICIPATION DE CANAL+ CINÉMA, FRANCE TÉLÉVISIONS ET DU CENTRE NATIONAL DU CINÉMA ET DE L'IMAGE AUDIOVISUELLE. AVEC LE SOUTIEN DE LA RÉGION ÎLE-DE-FRANCE.
DE LA RÉGION PROVENCE, ALPES-CÔTE D'AZUR ET DU FILM - UNO MEDIENSTIFTUNG NOW. EN ASSOCIATION AVEC INDEPILMS / CINÉMAGE 13 ET COFINOVA 15. DISTRIBUTION PATHE INTERNATIONAL, PATHE INTERNATIONAL.
DHARA TV SW DARIUS FILMS 3cinéma PAUDORA FILM INDEPILMS L'OFFICINE CINE+ CANAL+ CINE+1 france.tv [2] [4] [5] [6] [7] [8] [9] [10] [11] [12] [13] [14] [15] [16] [17] [18] [19] [20] [21] [22] [23] [24] [25] [26] [27] [28] [29] [30] [31] [32] [33] [34] [35] [36] [37] [38] [39] [40] [41] [42] [43] [44] [45] [46] [47] [48] [49] [50] [51] [52] [53] [54] [55] [56] [57] [58] [59] [60] [61] [62] [63] [64] [65] [66] [67] [68] [69] [70] [71] [72] [73] [74] [75] [76] [77] [78] [79] [80] [81] [82] [83] [84] [85] [86] [87] [88] [89] [90] [91] [92] [93] [94] [95] [96] [97] [98] [99] [100]



BELGIUM
ESA ESEC European
Space Security and
Education Centre

FRANCE
ESA Headquarters
Novespace

GERMANY
ESA EAC European
Astronaut Centre
ESA ESOC European
Space Operations Centre
ESA CEL Concurrent
Engineering Lab

ITALY
ESA ESRIN ESA Centre
For Earth Observation

THE NETHERLANDS
ESA ESTEC
The European
Space Research and
Technology Centre

SPAIN
ESA ESAC
European Space
Astronomy Centre
Cebrenos
OGS Optical Ground
Station

UK
ESA ECSAT
European Centre for
Space Applications and
Telecommunications

FRENCH GUIANA
Europe's Spaceport

ESA Locations

CONTENTS

French Guiana **132** Europe's Spaceport

United Kingdom **122** ESA ECSAT

Spain **98** ESA ESAC • Cebreros • OGS

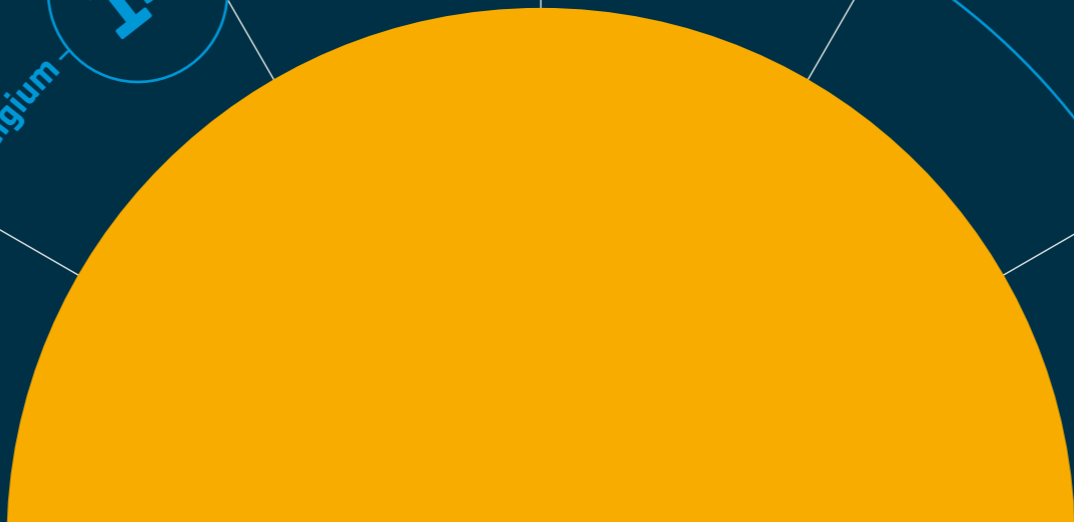
The Netherlands **80** ESA ESTEC

Italy **64** ESA ESRIN

Germany **42** ESA EAC • ESA ESOC • Concurrent Engineering Lab

Belgium **14** ESA ESEC

France **24** ESA Headquarters • Novespace





Belgium

Locations

● ESA ESEC



EUROPEAN SPACE
SECURITY AND
EDUCATION CENTRE

ESA ESEC

Sites

Antenna farm
Antenna interiors
Mission Control Room 90 m²
Mars Conference Room 140 m²
Exteriors

Address

1, Place de l'ESA
B-6890 Redu
Belgium

Nestled in the natural beauty of the Belgian Ardenne, ESA ESEC (European Space Security and Education Centre) boasts an eye-catching antenna farm, with over 40 large-scale antennas that continuously communicate data from satellites orbiting the Earth.

With its surrounding fields, and mix of vintage and new equipment and buildings, ESA ESEC is an impressive and contrasting feature in the landscape, located in the vicinity of the picturesque and easily-accessible Belgium village of Redu.

33 HECTARES

ESA ESEC sits on a huge site surrounded by fields with a total area of **33 hectares**

20 m WIDE

The largest antenna, the Galileo L-Band, stands at **20 m wide**



The idyllic slate and stone village of Redu, population 400, is known as **Belgium's book village**, attracting thousands of book-lovers from all over the world



Antenna close-up



Antenna farm



Official Delegate Room 140 m²
Accommodates up to 70 delegates



Exteriors
New building



Mission Control Room 90 m²
Modern satellite operations centre



Interior of antenna



Exteriors
Vintage building



France

Locations

- ESA Headquarters
- Novespace



EUROPEAN SPACE ESA Headquarters

Sites

Council Chambers 640 m²
Astrolabe Visitor Centre 77 m²
Terrace with view of Eiffel Tower 105 m²
Modern office spaces & interiors
VIP Terrace
VIP Room
Exteriors

Address

ESA HQ 8 (Mario Nikis)
10 Rue Mario Nikis CS 45741 F
75738 Paris Cedex 15
France

Perfectly positioned in the heart of Paris's 15th arrondissement, the impressive Headquarters of the European Space Agency reopened its doors in March 2023, following five years of intensive refurbishment works.

Flexible and ultra-modern, ESA Headquarters is the very embodiment of a European organisation at the cutting edge of high technology.

Spanning a total surface area of 11,606 m², the building's striking contemporary architecture and sleek interiors sit against the backdrop of the Eiffel Tower, bringing the spirit of quintessential Paris into this thoroughly new setting.



Terrace with view of Eiffel Tower



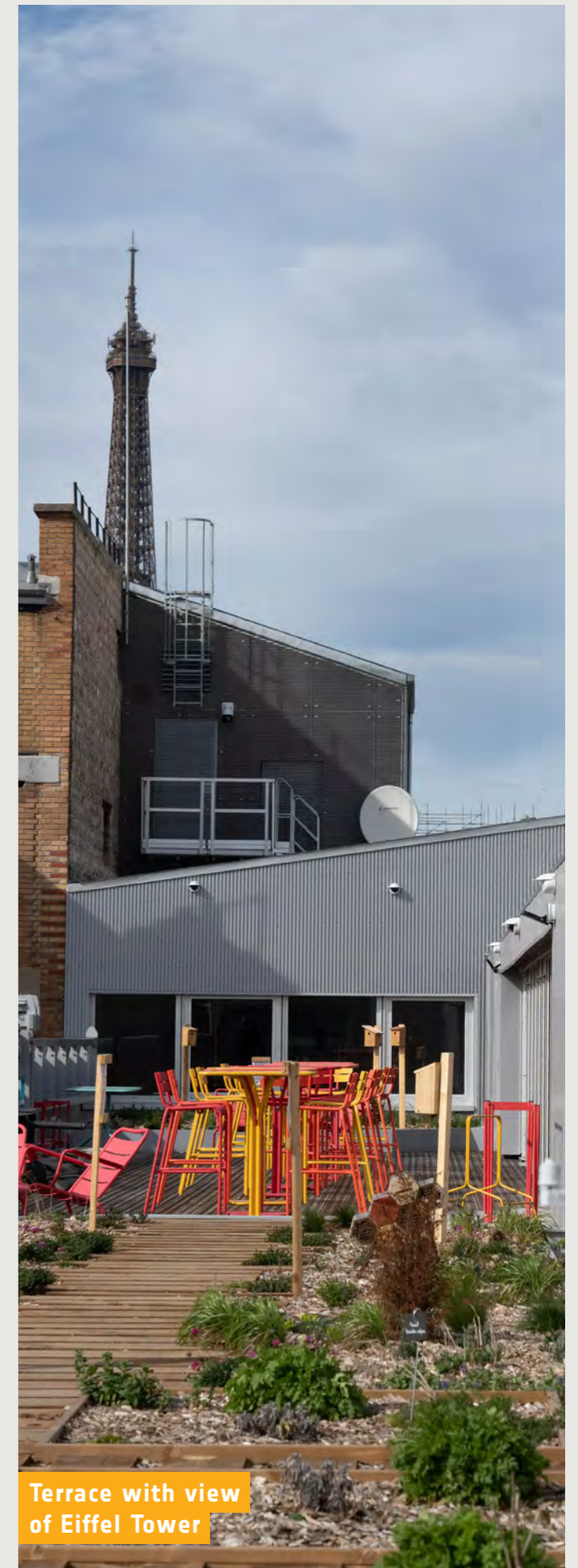
Exteriors



Exteriors



Exteriors with view of Eiffel Tower



Terrace with view of Eiffel Tower



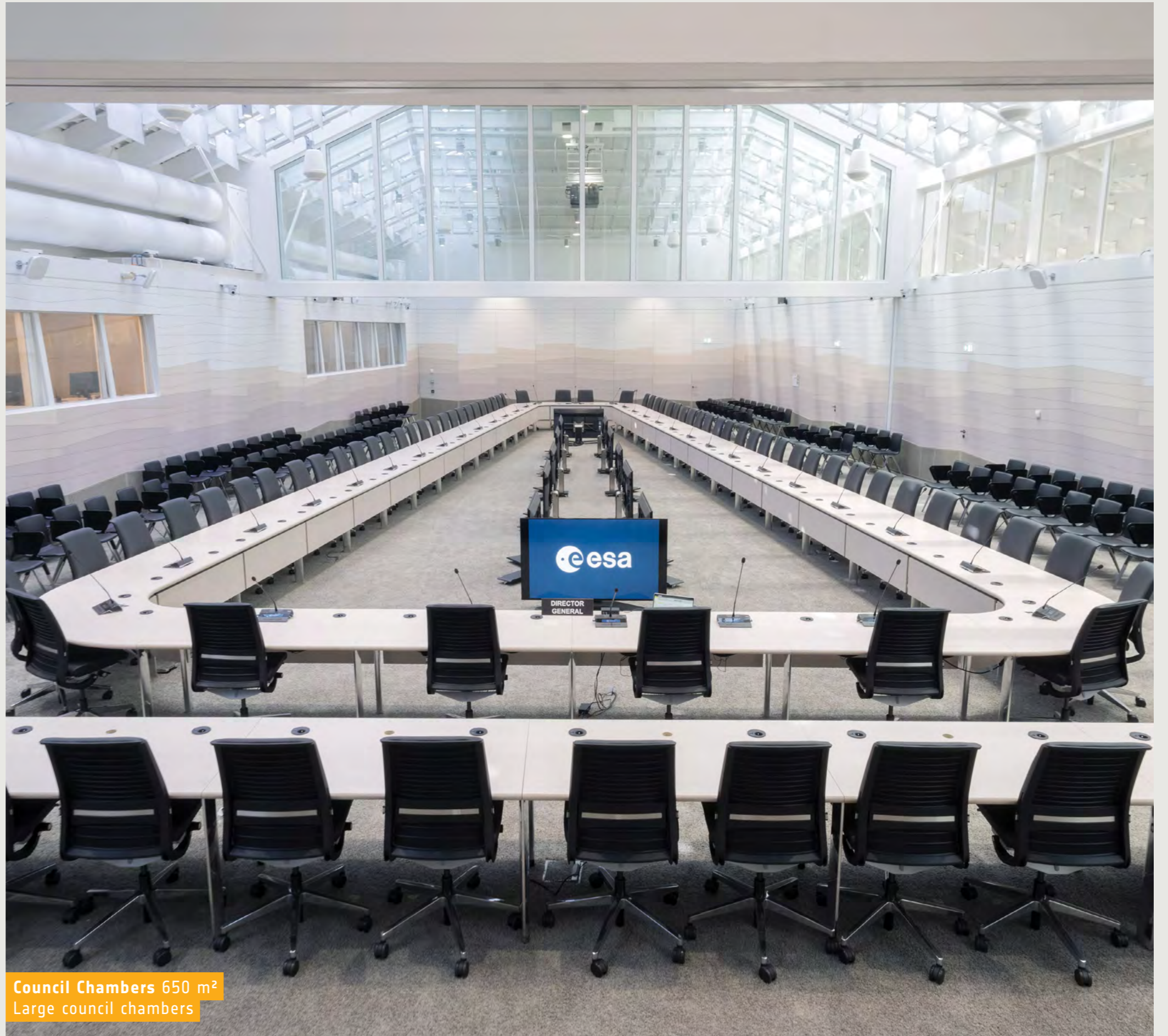
Modern office spaces & interiors
Cafeteria 112 m²



Modern office spaces & interiors
Open plan working spaces



Astrolabe Visitor Centre 77 m²
Visitor centre with space memorabilia



Council Chambers 650 m²
Large council chambers



Modern office spaces & interiors
Entry hall with striking staircase 250 m²



VIP Terrace



Modern office spaces & interiors



VIP Room

Novespace

Site

Airbus A310 Zero G
19.45 x 5 m; ceiling height 2.26 m

Address

Novespace
29 rue Marcel Issartier
33700 Mérignac
France

Shooting in zero gravity conditions is the only authentic way to capture weightlessness on screen, and Novespace's Airbus A310 Zero G is the only location in Europe that offers passengers this experience.

During a zero gravity flight, passengers prepare themselves for the parabolic manoeuvre - a special manoeuvre made by the pilot that creates a state of weightlessness inside the aircraft that lasts for 22 seconds each time. These zero gravity conditions are used by ESA scientists for important space experiments - with the manoeuvre performed up to 31 times on their research flights.

Given that it boasts the largest volume in the world in terms of passenger capacity and surface area, it's no surprise that Novespace's Airbus A310 Zero G has already attracted major films and commercials - including Tom Cruise's *The Mummy*, with the Hollywood actor shooting his authentic weightlessness scenes on-board.

TOM CRUISE

Tom Cruise shot zero gravity scenes for **The Mummy** here

1

Novespace is the **only** zero gravity operator in Europe, and Airbus A310 Zero G boasts the largest volume in the world





Airbus A310 Zero G 19.45 x 5 m; ceiling height 2.26 m
Novespace's zero gravity aircraft



Passengers experience true weightlessness



Capacity of up to 40 passengers, excluding flight crew



Germany

Locations

- ESA EAC
- ESA ESOC
- ESA CEL



ESA EAC

EUROPEAN
ASTRONAUT CENTRE

Sites

Columbus PR mock-up 32 m²
Astronaut Training Hall 1471 m²
Neutral buoyancy facility 1081 m²
Entry Hall 167 m²
ESA EAC Exteriors

Address

Linder Hoehe
D-51147 Cologne
Germany

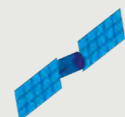
ESA EAC (European Astronaut Centre) is the European centre of excellence for astronaut training and support - preparing the select few men and women for their liftoff to an exciting future of space exploration.

Here in Cologne, European and international astronauts are equipped with the skills and knowledge they need to fly to the International Space Station (ISS), using a range of specialist training facilities.

These include replicas of the European Columbus laboratory, which is ESA's largest contribution to the International Space Station; simulators and training models; and a 10-metre-deep Neutral Buoyancy Facility where astronauts prepare for spacewalks.

31 SPACE MISSIONS

An impressive **31 space missions** have been performed by **27 astronauts** from ESA and its member states



ESA's Columbus Research Laboratory was launched to the **International Space Station** in 2008, where it is permanently attached



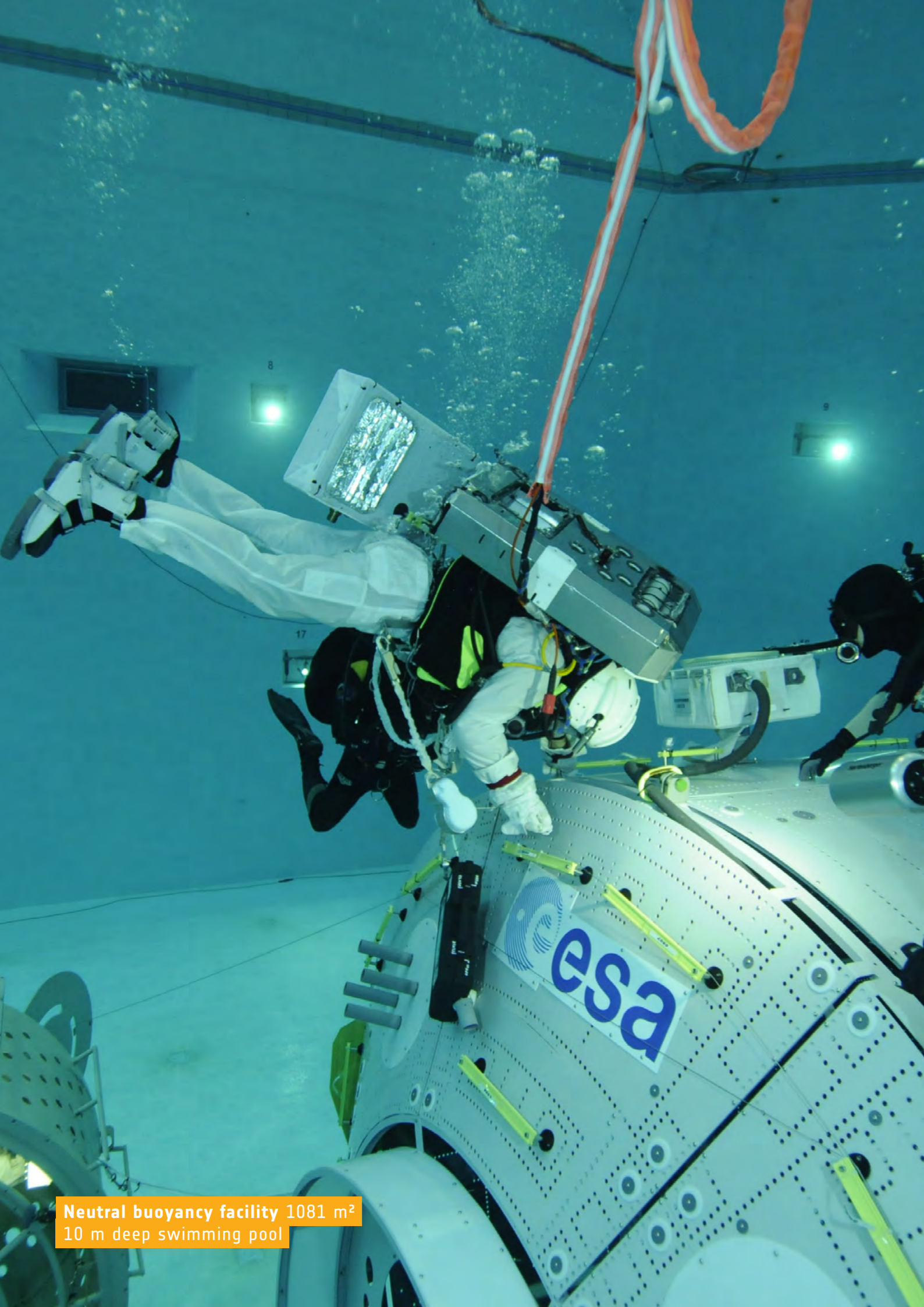
Astronauts are trained in **SCUBA diving** at EAC, as a number of space operations are rehearsed under water in simulated microgravity conditions



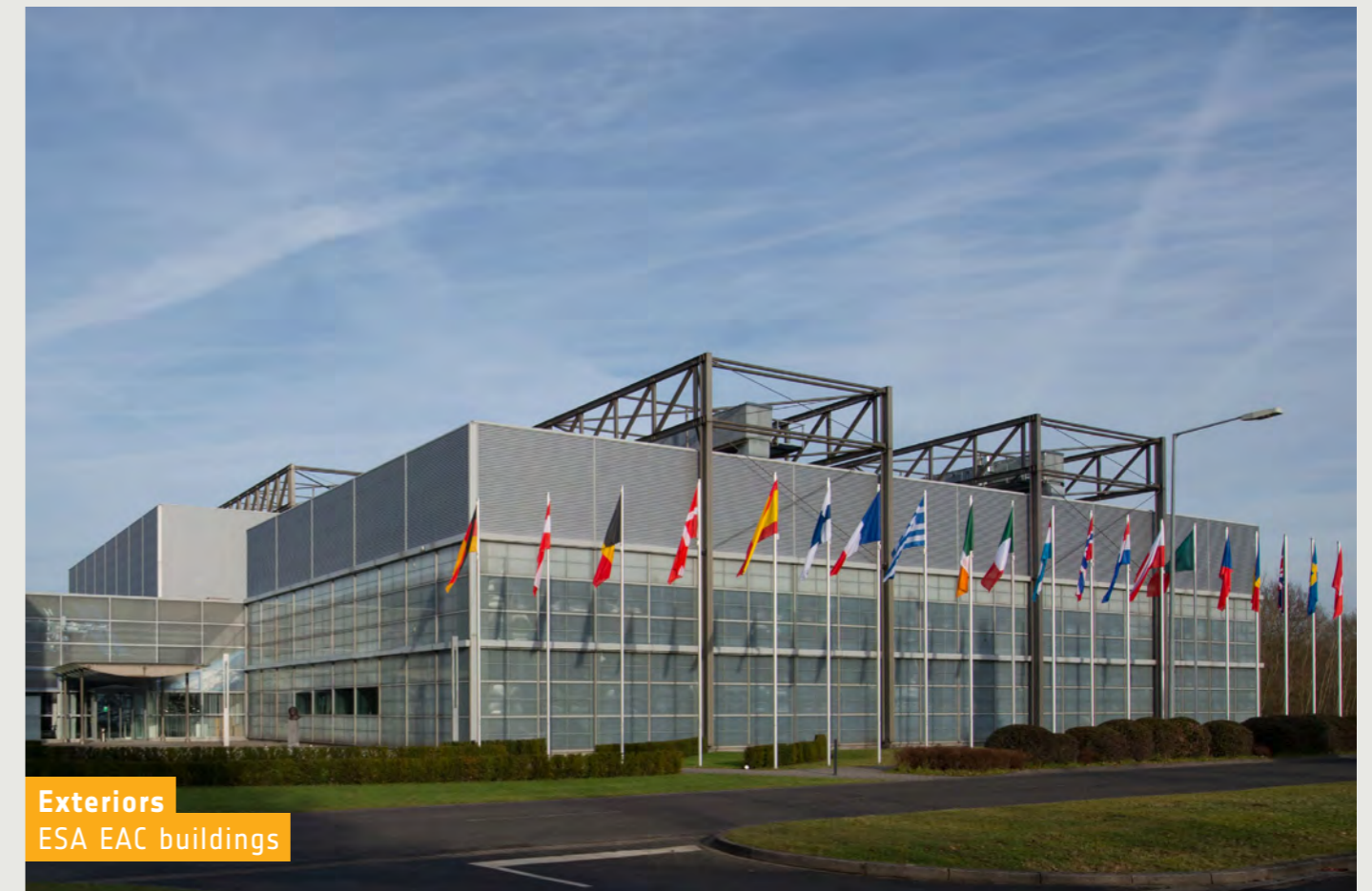
Columbus PR mock-up 32 m²
Model of Columbus research laboratory



Neutral buoyancy facility 1081 m²
Buoyancy training facility



Neutral buoyancy facility 1081 m²
10 m deep swimming pool



Exteriors
ESA EAC buildings



Entry Hall 167 m²
Large hall featuring model rockets
and space themed paraphernalia



Astronaut Training Hall 1471 m²



BIOLAB training facility



Space simulators and models

EUROPEAN SPACE OPERATIONS CENTRE

ESA ESOC

Sites

Main Control Room 215m²
Entry Hall 145m²
Press Centre 274m²
GSRF 336m²
General interiors
Exteriors & Smile Antenna

Address

Robert-Bosch-Str. 5
64293 Darmstadt
Germany

Minutes before launch, the atmosphere in the Main Control Room is tense. Engineers watch their screens, waiting for the moment when years of preparation come to fruition. A voice on the intercom loop reads the countdown: 10, 9, 8, 7...

Welcome to European Space Agency's mission control - the place that links the people on the ground with the spacecraft travelling to the frontiers of human knowledge.

Here at ESA ESOC (European Space Operations Centre) in Darmstadt, engineering teams work around the clock to control spacecraft in orbit, while also managing the global tracking station network and designing and building the systems on the ground that support missions in space.

100

SATELLITES

Since 1967, over **100 satellites** belonging to ESA and its partners have been successfully operated from Darmstadt



Main Control Room 215 m²
European Space Agency's mission control room



esa
ESOC

esa
ESOC

312 14:36:57
+ 146:30:02

312 14:36:57
+ 146:30:02

312 14:36:57
+ 146:30:02

312 14:36:57
+ 146:30:02

312 14:36:57
+ 146:30:02

312 14:36:57
+ 146:30:02

312 14:36:57
+ 146:30:02

312 14:36:57
+ 146:30:02

european space operations centre

Main Control Room 215 m²
European Space Agency's mission control room



GSRF 336 m²
Modern technical lab



Smile Antenna



Exteriors
ESA ESOC Main Building



Entry Hall 145 m²
Spacious high-ceiling entry hall



General Interiors
Planetary missions
control room



Press Room 274 m²
Large modern conference
and events room

CONCURRENT ESA ENGINEERING LAB CEL

Sites

Concurrent Engineering Lab 40 m²
TRACE room 69.82 m²
Exteriors

Address

Otto-Berndt-Straße 2
64287 Darmstadt
Germany

The technical systems used in the space industry are cutting edge and ever-evolving.

Based at Darmstadt Technical University, the Concurrent Engineering Lab is a modern facility equipped with the very latest equipment, where researchers and students can work to develop innovative solutions in this area.



Exteriors

Large red gear at
entrance to the building



TRACE room 69.82 m²
Modern lab space with
industrial style ceiling



Concurrent Engineering Lab 40 m²
Computer engineering lab



Italy

Locations

● ESA ESRIN



ESA CENTRE FOR EARTH OBSERVATION ESRIN

Sites

Memorabilia Wall 68 m²
 Phi Experience 218 m²
 Visitor Centre 113 m²
 Building 12 220 m²
 Magellan Terrace 546 m²
 Big Hall 426 m²
 Green Space 30000 m² cultivated land,
 10940 m² olive groves

Address

Via Largo Galileo Galilei,
 1, 00044 Frascati RM
 Italy

Satellites keep a constant watch over the Earth, and the data they provide help to safeguard the planet in which we live.

ESA's Earth observation activities are located in the small town of Frascati, 20 km South of Rome. Europe's small-scale launcher vehicle Vega was developed here, as well as its future iterations Vega C, and Space Rider - Europe's first reusable space transportation system.

ESA ESRIN is also home to the European Centre for Space Records, preserving the valuable technical records of completed ESA projects, and a Virtual Reality Theatre, offering visual presentations of complex Earth Observation and geographic data for both specialists and students.



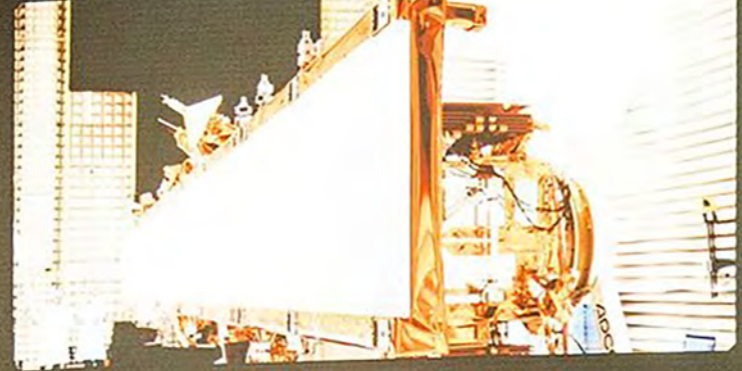
ESA ESRIN sits on a site of 30000 m² of cultivated land and 10940 m² of **olive groves**



The **largest archive of environmental data** in Europe is maintained at ESA ESRIN



Building 12 220 m²





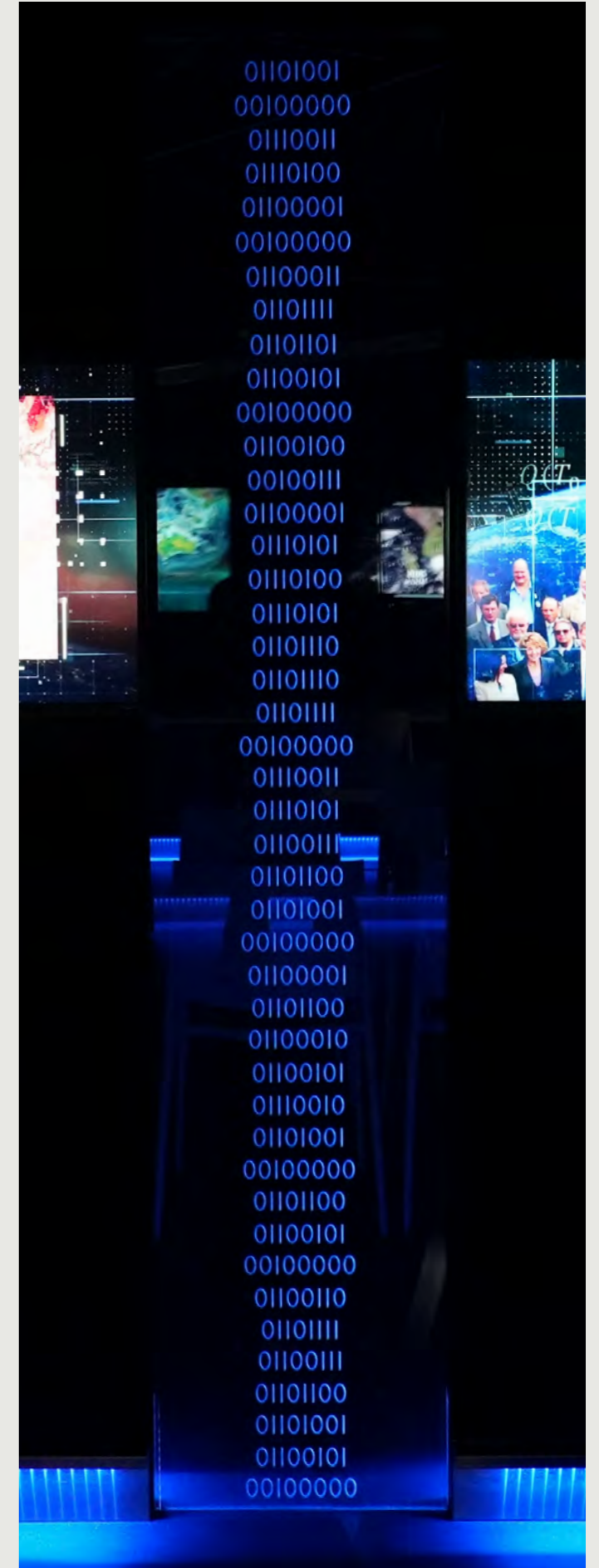
Memorabilia Wall 68 m²



Data centre 222.64 m²



Phi Experience 218 m²





Long term preservation data centre 169.27 m²



Heritage Missions Walkthrough





Model outside Building 1



Green Space
30000 m² cultivated land,
10940 m² olive groves



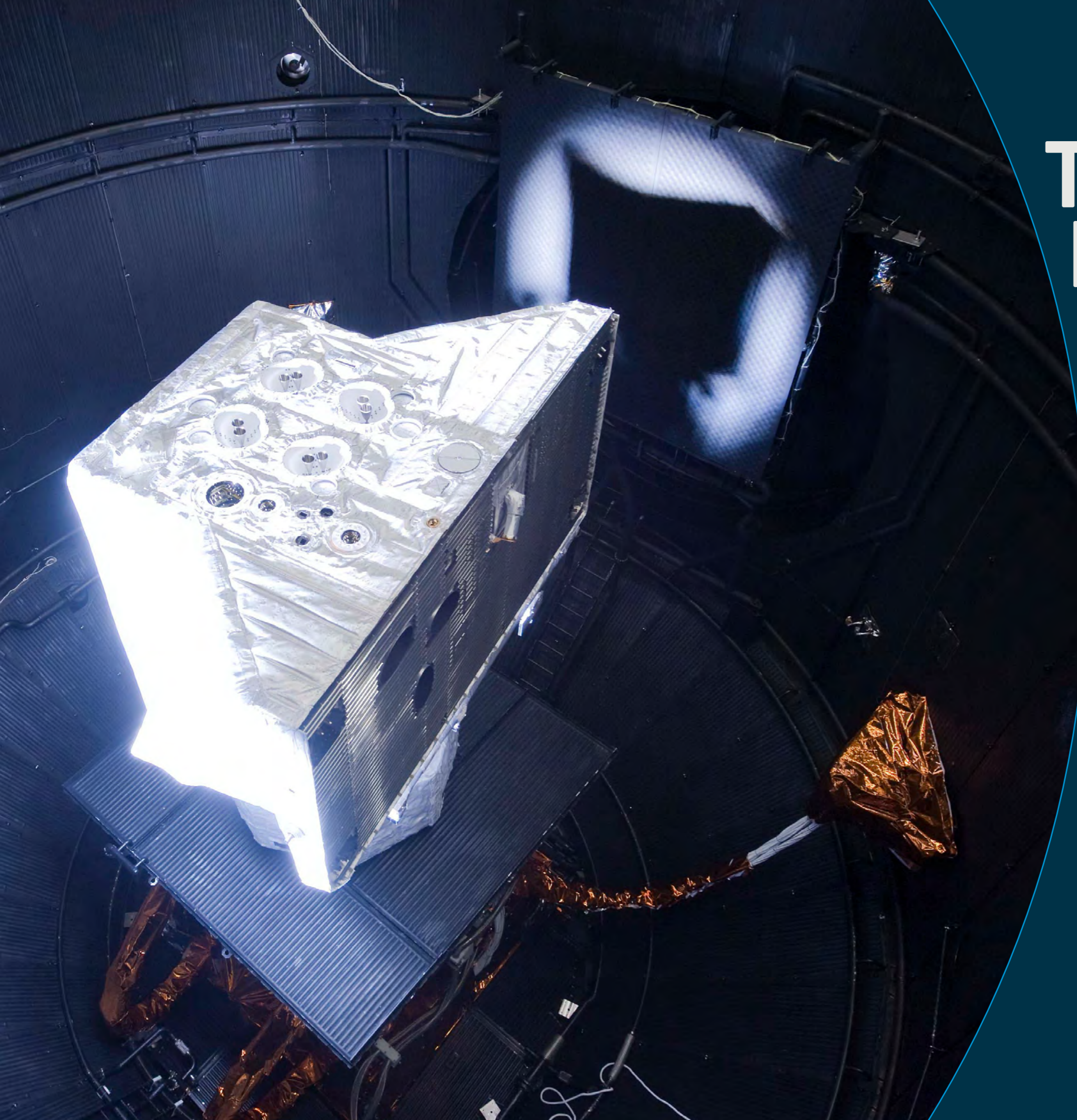
Phi-lab Garden 80m²



Phi-lab office spaces



Phi-lab Tower



The Netherlands

Locations

● ESA ESTEC



EUROPEAN SPACE RESEARCH AND TECHNOLOGY CENTRE

ESA ESTEC

Sites

Erasmus Innovation Centre 796.6 m²
Hertz Chamber 364 m²
Large European Acoustic Facility 99 m²
Large Space Simulator
10 m wide, 15 m high, volume of 2300 m³
Large Diameter Centrifuge 8 m wide
Test Centre 11893 m²
Other interiors

Address

Keplerlaan 1
Postbus 299
2200 AG Noordwijk
The Netherlands

Nestled beside coastal dunes in Noordwijk in the Netherlands, ESA ESTEC (The European Space Research and Technology Centre) is ESA's largest site and the technical heart of Europe's space efforts.

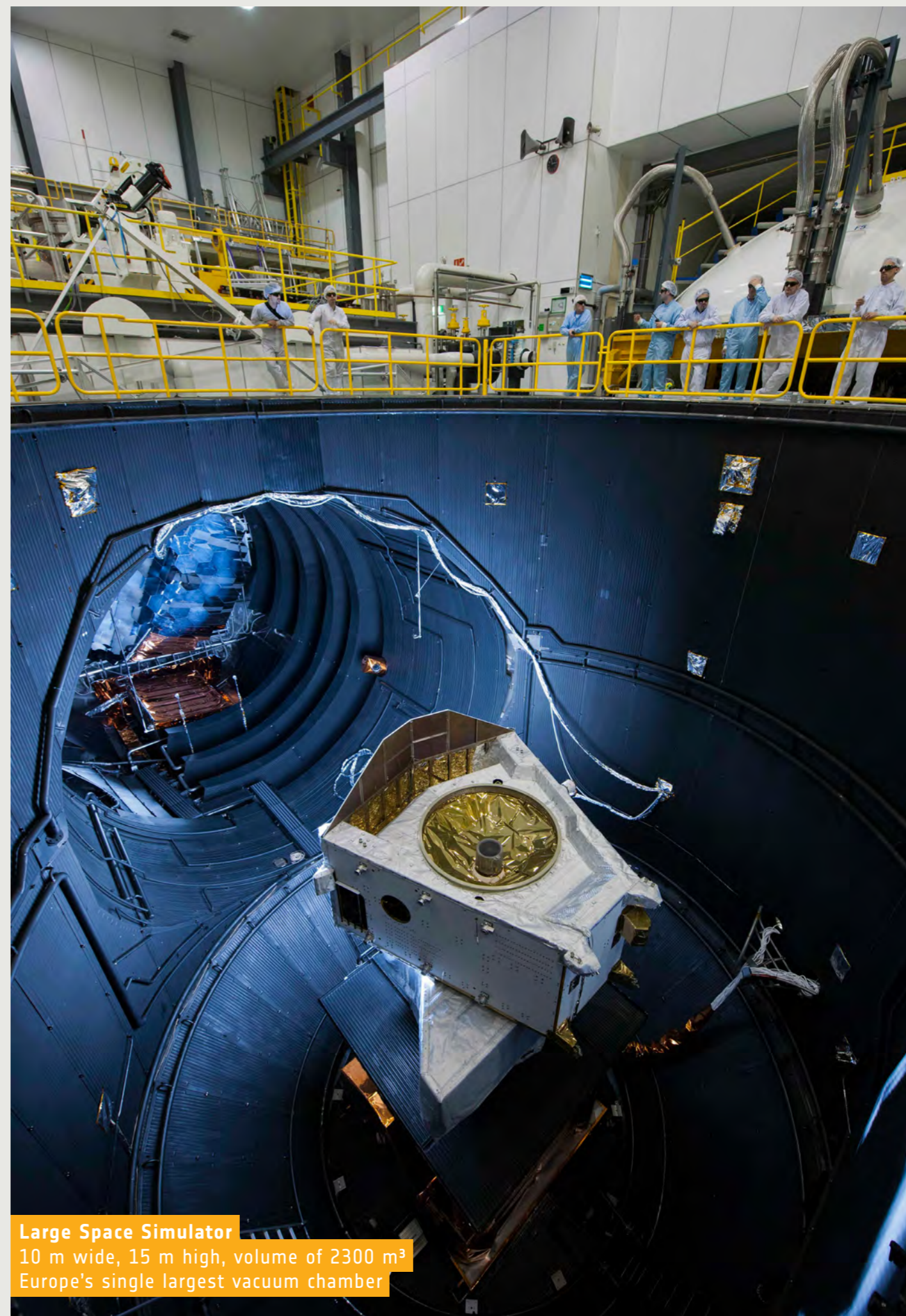
This is where most ESA spacecraft projects are born and guided through their phases of development. It is home to Europe's largest satellite test centre, equipped with simulation facilities to reproduce every aspect of the space environment; the Large Diameter Centrifuge for high-gravity testing; and the Large Space Simulator - Europe's single largest vacuum chamber, used to test full-size spacecraft in representative space conditions.

50000 L LIQUID NITROGEN

Up to 50000 litres of liquid nitrogen are pumped into giant vacuum testing chambers to keep them as cold as outer space

156 DECIBELS

The acoustic chamber LEAF can produce up to 156 decibels - like standing close to **multiple jets taking off**



Large Space Simulator
10 m wide, 15 m high, volume of 2300 m³
Europe's single largest vacuum chamber



Hertz Chamber 78 m²
The chamber simulates the boundless conditions of space



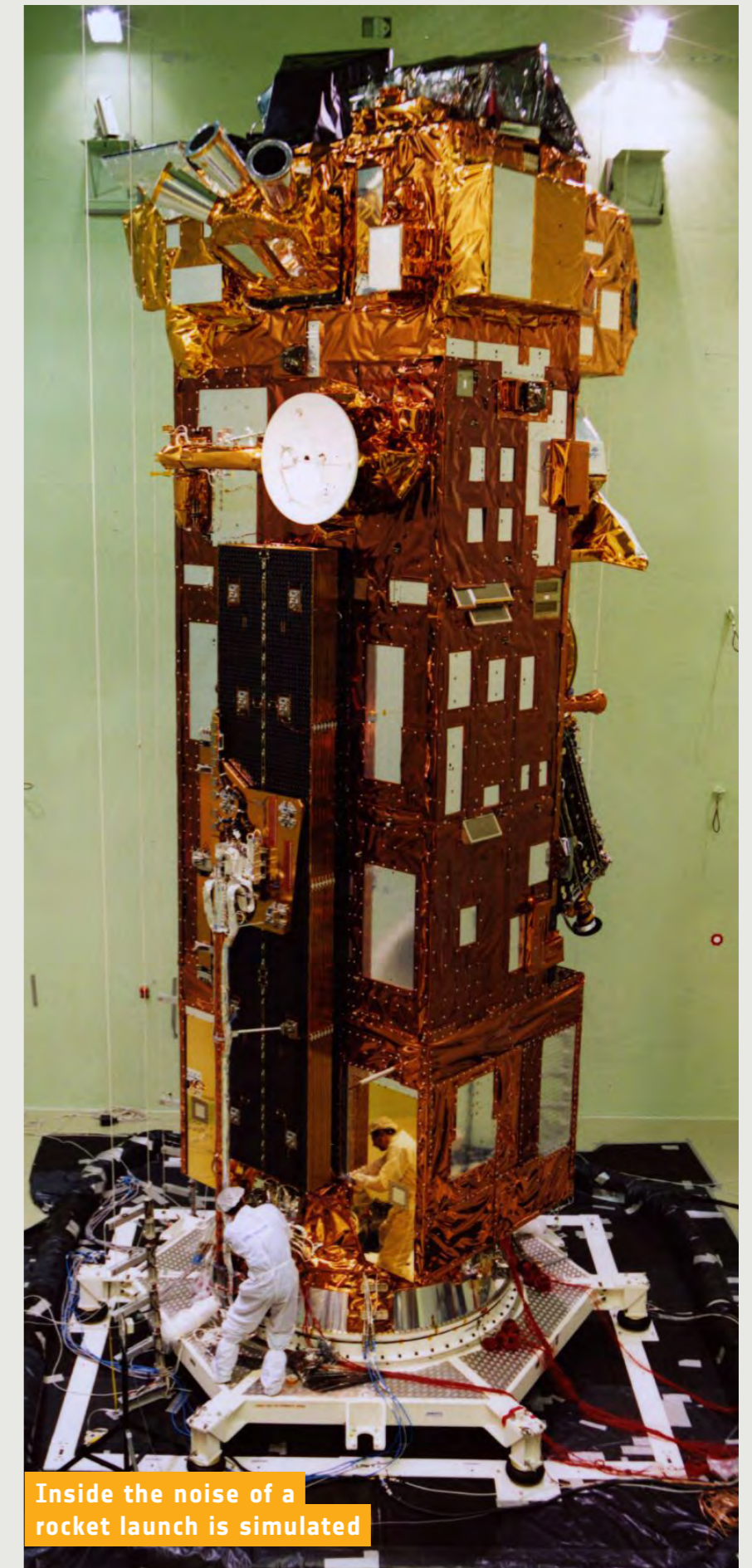
Hertz Chamber 364 m²
Hertz chamber for radio-frequency testing of satellites



Large Diameter Centrifuge 8 m-wide
Cameras inside the boxes allow for filming while it is moving



Large European Acoustic Facility 99 m²
The largest sound system in Europe



Inside the noise of a rocket launch is simulated



Erasmus Innovation Centre 197 m²
A variety of space models
can be filmed or taken out



Erasmus Innovation Centre 796.6 m²
Large exhibition and conference space



Other interiors
Rainbow corridor



Other interiors

New conference room 327 m²
Ready in second half of 2024



Other interiors
Lobby 430 m²
Ready in second half of 2024



Spain

Locations

- ESA ESAC
- Cebreros
- Optical Ground Station



EUROPEAN SPACE ASTRONOMY CENTRE

ESA ESAC

Sites

D Building
 Exteriors with castle
 SMOS control room 60 m²
 Gaia Satellite
 Cesar observatory 4 m² approx.
 GSSC Science Support Centre 40 m²
 Aerial view of ESA ESAC

Address

Camino Bajo del Castillon S/N
 28692 Villanueva de la Cañada
 Madrid
 Spain

Telescopes in space are humankind's eyes in the heavens: from their observing positions high above Earth's atmosphere, they provide us with astounding views of the Universe at many different wavelengths.

ESA ESAC (European Space Astronomy Centre) is where some of those views are first studied – signals from black holes and distant galaxies, from neighbouring planets and even from planets far beyond the Solar System, are beamed back to the Madrid countryside.

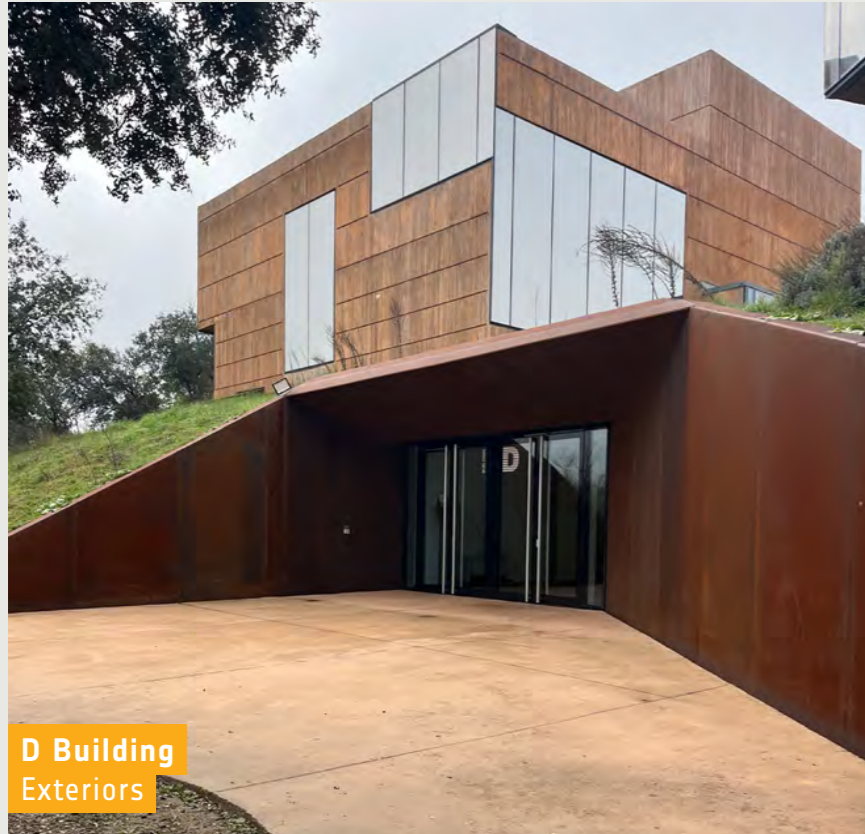
30

MISSIONS

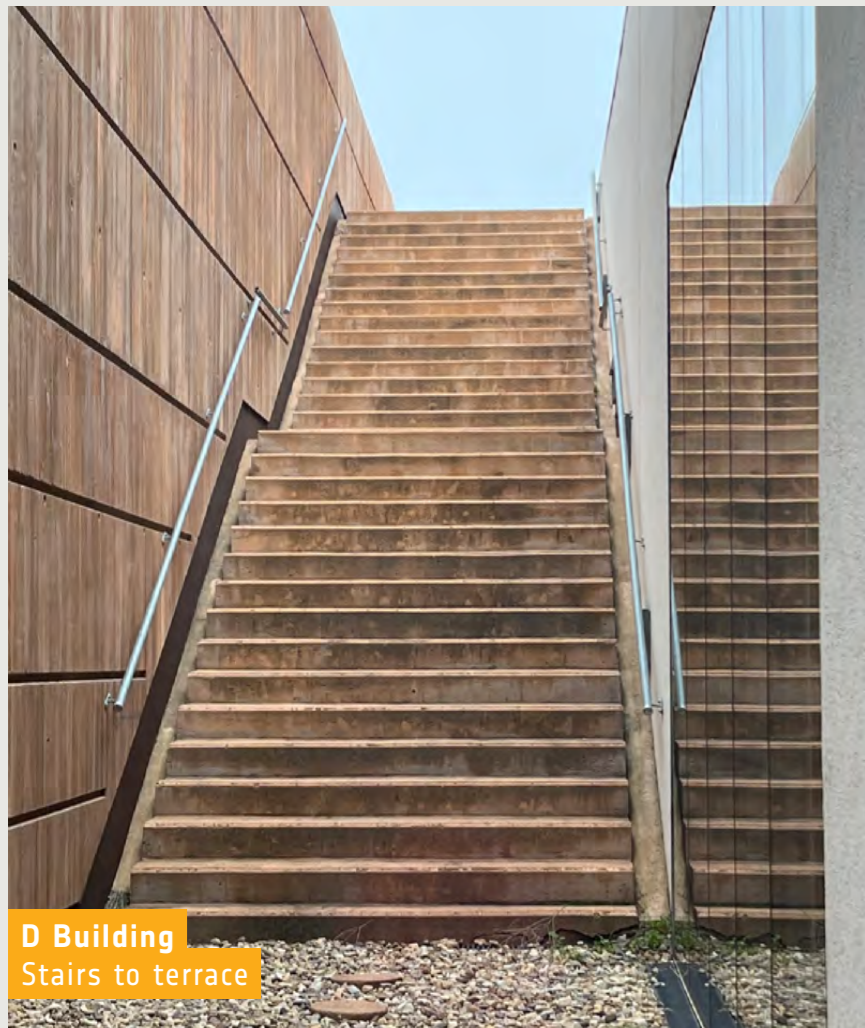
ESA's science fleet explores our **solar system**, our **galaxy** and **beyond**



Exteriors with castle



D Building
Exteriors



D Building
Stairs to terrace



D Building
Aerial view of exteriors



Gaia Satellite
Scale 1:1



Cesar Observatory 4 m² approx.
A small observatory



GSSC Science Support Centre 40 m²



D Building
Hall 176 m²



D Building
Conference Room 230 m²



SMOS Control Room 60 m²
Control room for the Soil Moisture
and Ocean Salinity (SMOS) mission



Aerial view of ESA ESAC
Nestled in the Madrid countryside

Cebreros Ground Station

Sites

Big dish antenna
35 m wide, 40 m high
Operations room 122 m²
Exteriors and landscape

Address

Cebreros Satellite Tracking Station
Carretera AV-562, Km 10
E-05260 Cebreros
Avila
Spain

Rising up from tree-covered terrain 77 km west of central Madrid, Cebreros ground station is a futuristic sight in the rolling-hill countryside region of Avila.

Here the 35-metre wide, 40-metre high Deep Space Antenna 2 receives signals from a number of deep-space missions, including Mars Express, Gaia, BepiColombo, Solar Orbiter, Juice and Euclid.

**10 NOV
2005**

Cebreros antenna's first X-band signal was received from the spacecraft **Venus Express**, on 10 November 2005

**620
TONNES**

The big dish antenna weighs approximately **620 tonnes**



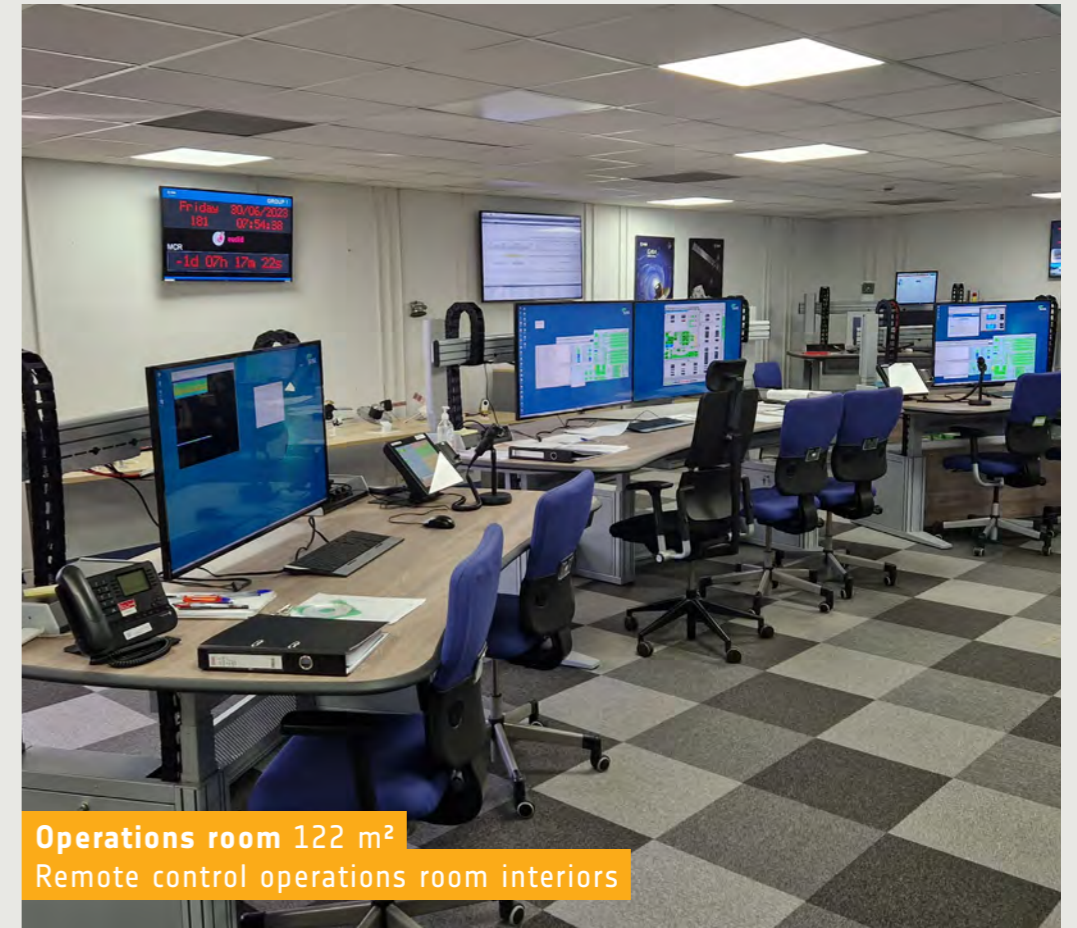
Big dish antenna
35 m wide, 40 m high



Exteriors & landscape
The antenna in the tree-covered terrain of Cebros



Deep Space Antenna 2



Operations room 122 m²
Remote control operations room interiors



Optical Ground Station

Sites

Optical Ground Station

Address

38570 La Orotava
Santa Cruz de Tenerife
Spain

ESA's Optical Ground Station (OGS) provides a link between deep-space and Earth, housing a 1 meter aperture Zeiss telescope used to search for asteroids and confirm the orbits of newly discovered objects in space.

Situated on the volcanic island of Tenerife, the OGS also performs regular testing of optical systems on ESA spacecraft in-orbit, and participates in communication experiments with satellites from international partners.

2400

METRES

The OGS is located
2400 m above sea level





Optical Ground Station
A link between deep-space and Earth



Optical Ground Station
Housed on the volcanic island of Tenerife



United Kingdom

Locations

● ESA ECSAT



EUROPEAN CENTRE FOR SPACE APPLICATIONS AND TELECOMMUNICATIONS

ESA ECSAT

Sites

Vulcan Facility 165 m²
Conference Centre 1500 m²
Director's office 29 m²
5G/6G Hub 28 m²
Exteriors

Address

Fermi Avenue
Harwell Campus
Didcot
OX11 0FD
United Kingdom

Satellite communications are not only fundamental for space exploration, they are also widely used across more down-to-earth markets - many of which we interact with in day-to-day life.

At ESA's UK hub, ESA ECSAT (European Centre for Space Applications and Telecommunications), the focus is on developing commercial satcom products and services, downstream applications, and the 'spin-out' of space into non-space sectors.

Located on the sprawling Harwell Campus in Oxfordshire, it is also the home of the Earth Observation Climate Office, which uses data from satellite observations to advance global efforts to tackle the climate crisis.

6G

ECSAT hosts **ESA's flagship 5G/6G Hub**, a research and demonstration facility that spurs industry collaboration to advance the 5G digital transformation and prepare for the development of 6G



Exteriors
Roy Gibson building



ESA-RAL Advanced Manufacturing Lab
The Lab helps to understand the capabilities of 3D printing and other advanced manufacturing techniques for future space missions



5G/6G Hub 28 m²
The 5G/6G hub at ESA ECSAT



VULCAN Facility 165 m²
Exterior



VULCAN Facility 165 m²
Spaceship ECSAT robotic arm



Climate Office
A climate globe within
ESA ECSAT's entrance foyer



VULCAN Facility 165 m²
Lab set up



Conference Centre 1500 m²



Exteriors
ESA ECSAT entrance



Conference Centre 1500 m²
Main conference hall



French Guiana

Locations

● Europe's Spaceport



EUROPE'S SPACEPORT IN FRENCH GUIANA

Europe's Spaceport

Sites

Vega launch complex
Ariane 5 launch complex
Ariane 6 launch complex
Jupiter Control Tower
Diane tracking station
Galliot tracking station
Payload Preparation Facilities
Space Museum (under renovation)

Address

ESA/STS Kourou Office
BP 816 Route de l'Espace
97388 Kourou Cedex
France

Situated in the northeast of South America in French Guiana, an overseas department of France, Europe's Spaceport is the site of Ariane and Vega launches.

Here in this lush site close to the equator boosters are prepared, launchers are assembled and fuelled, and satellites propelled into space.

90% of the 700 km² site is left in a natural state, with habitats including tropical rainforest, mangroves, wet and dry savannahs, water courses, and 50 km of Atlantic coastline.

5°3' LATITUDE

Kourou lies at latitude 5°3', just over **500 km north of the equator**. Its nearness to the equator makes it ideally placed for launches to geostationary orbit thanks to the 'slingshot' effect



Outside of hurricane and earthquake zones, the stable climate allows **year-round launches**

300 LAUNCHES

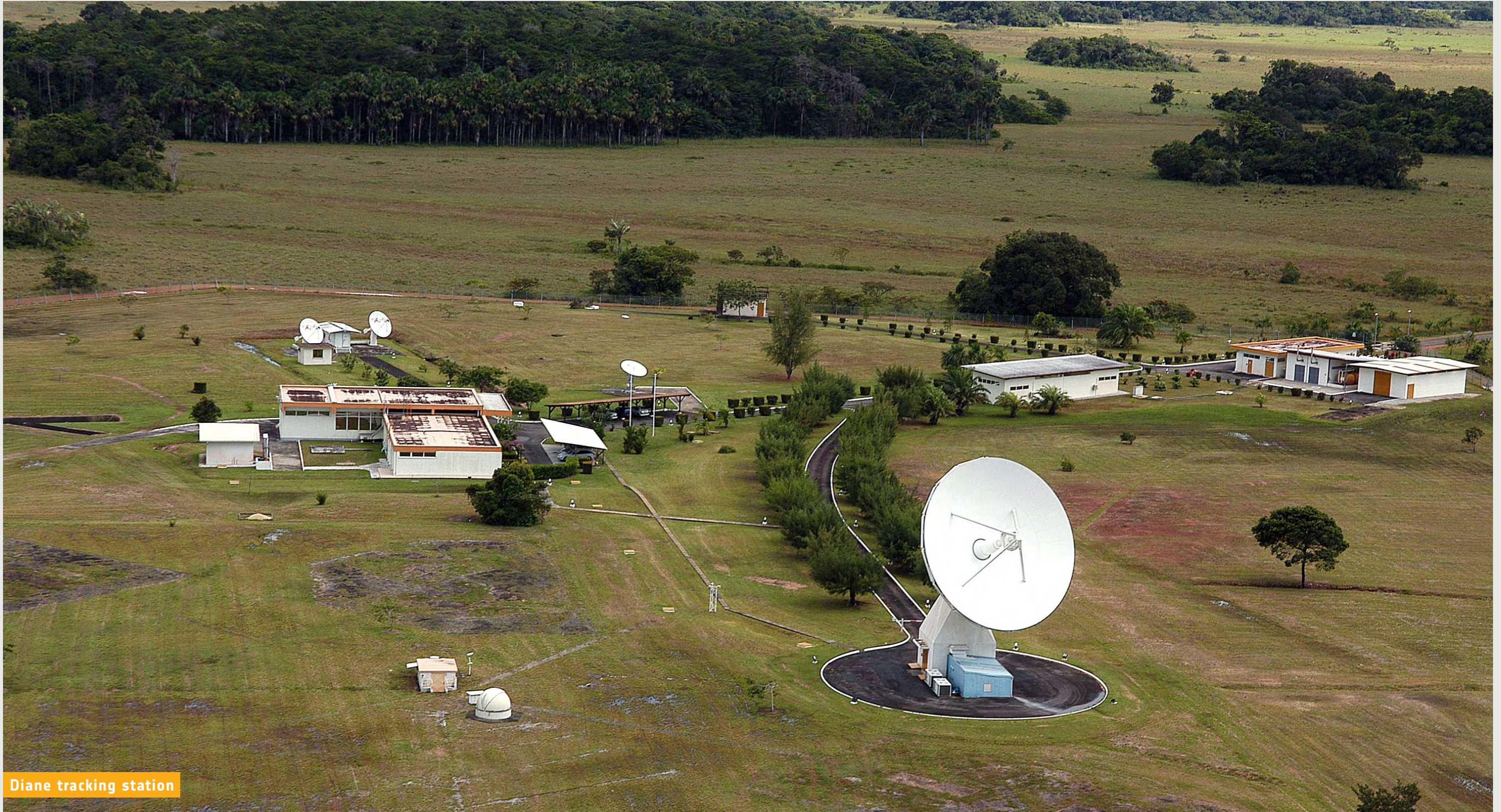
Since its inauguration in **1968**, the Spaceport has witnessed more than **300 launches**



Vega/Vega C Launch Complex



Ariane 6 launch zone



Diane tracking station



Galliot tracking station



Galliot tracking station



Diane tracking station



Jupiter Control Tower



Technical Centre



Payload Preparation Facilities



Space Museum
Under renovation



Ariane 5 launch complex



Ariane 5 launch complex

Image Credits

All images are the copyright of ESA unless stated otherwise.

Page	Locations	Photographer
1	Europe's Spaceport	© 2023 ESA-CNES-ARIANESPACE-Arianegroup / Optique Vidéo du CSG – P BAUDON
2	Spain OGS	IQOQI Vienna, Austrian Academy of Sciences
4	Kourou	ESA-CNES-ARIANESPACE-ArianeGroup/S Martin
5	ESEC	ESA - A. Van Der Geest
5	EAC	ESA - H. Rueb, 2010
5	ESOC	ESA - J. Mai
5	ESTEC	ESA
6	ESTEC	ESA/Snow Patrol/S. Lipman
8	ESTEC	ESA - A. Le Floch
8	ESTEC	Sascha Martin
9	EAC	Dharamsala - Darius Film

Belgium

Page	Locations	Photographer
14	ESEC	ESA - D. Galardini
17	ESEC	ESA- S. Corvaja
18	ESEC	ESA - S. Corvaja
20	ESEC	ESA - S. Corvaja
22	ESEC	ESA - S. Corvaja
22	ESEC	ESA - S. Corvaja
22	ESEC	ESA - S. Corvaja
22	ESEC	ESA - S. Corvaja

France

Page	Locations	Photographer
26	HQ	ESA - P. Sebirot
28	HQ	ESA - P. Sebirot
30	HQ	ESA - P. Sebirot
31	HQ	ESA - P. Sebirot
31	HQ	ESA - P. Sebirot
32	HQ	ESA - P. Sebirot
34	HQ	ESA - P. Sebirot
39 - 41	France	Novespace

Germany

Page	Locations	Photographer
42	EAC	ESA - H. Rub
45	EAC	ESA - S. Corvaja
46	EAC	ESA-S. Corvaja, 2015
48	EAC	ESA - H. Rub, 2010
49	EAC	ESA-S. Corvaja
49	EAC	ESA
50	EAC	ESA
51	EAC	ESA - Isabelle Kahabka
51	EAC	ESA - S. Corvaja
51	EAC	ESA - S. Corvaja
51	EAC	ESA - S. Corvaja
53	ESOC	ESA - J.Mai
54	ESOC	ESA- J.Mai
56	ESOC	ESA
56	ESOC	ESA - Jürgen Mai
57	ESOC	ESA - André Løfaldli
58	ESOC	ESA - Jürgen Mai
59	ESOC	ESA
59	ESOC	ESA - Jürgen Mai
61	CEL	TU Darmstadt
62	CEL	Simon Burgis
62	CEL	FSR TU Darmstadt

Italy

Page	Locations	Photographer
67	ESRIN	ESA
68	ESRIN	ESA
70	ESRIN	ESA - Stefano Palchetti

72	ESRIN	ESA - Stefano Palchetti
74	ESRIN	ESA - Stefano Palchetti
76	ESRIN	ESA - Alessia Garofalo
77	ESRIN	ESA - Alessia Garofalo
77	ESRIN	ESA - Alessia Garofalo
78	ESRIN	ESA - Stefano Palchetti

The Netherlands

Page	Locations	Photographer
83	ESTEC	ESA
84	ESTEC	ESA-P. de Maagt
86	ESTEC	ESA-G. Porter
88	ESTEC	ESA-A. Le Floch
89	ESTEC	ESA-A. Le Floch
90	ESTEC	ESA - G. Porter
91	ESTEC	ESA - A. Van Der Geest
92	ESTEC	ESA
92	ESTEC	ESA - Felix Schmidt
93	ESTEC	ESA - G.Porter
94	ESTEC	SBGA Blengini Ghirardelli
96	ESTEC	SBGA Blengini Ghirardelli

Spain

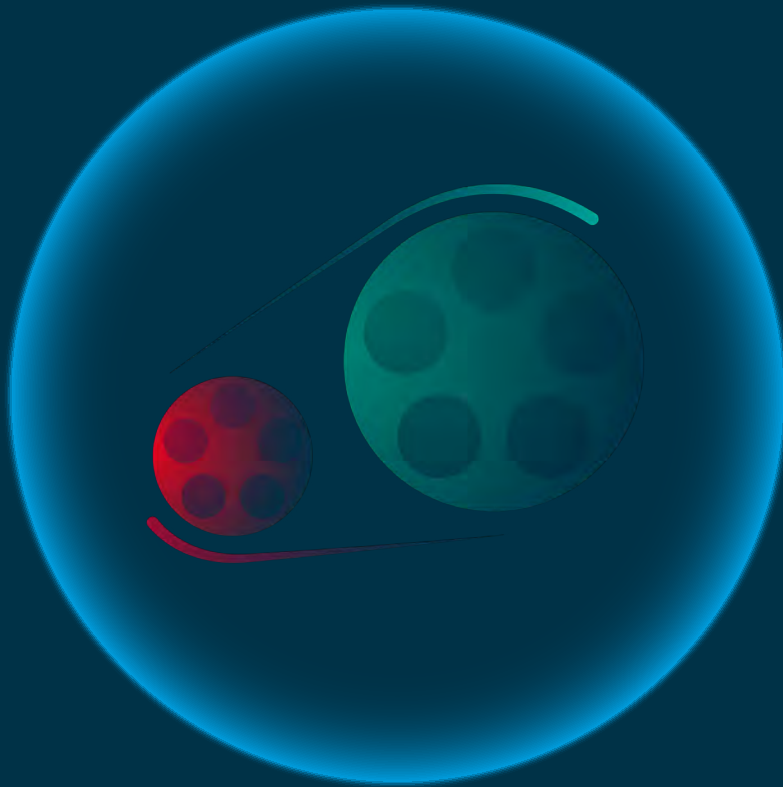
Page	Locations	Photographer
101	ESAC	ESA - S. Corvaja
102	ESAC	ESA
104	ESAC	ESA - Rocio Penalver Reid
104	ESAC	ESA - Rocio Penalver Reid
105	ESAC	ESA - Rocio Penalver Reid
106	ESAC	ESA - Rocio Penalver Reid
107	ESAC	ESA
107	ESAC	ESA - Rocio Penalver Reid
108	ESAC	ESA
110	Cebreros	ESA - J. Mai
112	Cebreros	Cebreros
114	Cebreros	ESA
115	Cebreros	ESA
115	Cebreros	Cebreros
117	OGS	StarryEarth via Flickr
118	OGS	IQOQI Vienna, Austrian Academy of Sciences
120	OGS	IQOQI Vienna, Austrian Academy of Sciences

United Kingdom

Page	Locations	Photographer
122	ECSAT	James Talbot, ESA 5G/6G Team
125	ECSAT	Harwell Campus
126	ECSAT	Martina Meisnar, ESA/RAL AML team
128	ECSAT	James Talbot, ESA 5G/6G Team
129	ECSAT	Kamini Manick, Vulcan Lab team
129	ECSAT	Romain Charles, Spaceship ECSAT team
129	ECSAT	Elena Filippazzo, ESA outreach office
129	ECSAT	Kamini Manick, Vulcan Lab team
130	ECSAT	ESA/Max Alexander
130	ECSAT	ESA
130	ECSAT	ESA/Max Alexander

French Guiana

Page	Locations	Photographer
132	Europe's Spaceport	© 2023 ESA-CNES-ARIANESPACE-Arianegroup / Optique Vidéo du CSG – S MARTIN
135	Europe's Spaceport	© 2018 ESA-CNES-ARIANESPACE / Optique Vidéo du CSG – P BAUDON
136	Europe's Spaceport	© 2023 ESA-CNES-ARIANESPACE-Arianegroup / Optique Vidéo du CSG – P BAUDON
138	Europe's Spaceport	© 2005 ESA-CNES-ARIANESPACE /photo Optique Vidéo du CSG
140	Europe's Spaceport	© 2014 ESA-CNES-ARIANESPACE / Optique Vidéo du CSG – P BAUDON
142	Europe's Spaceport	© 2020 ESA-CNES-ARIANESPACE / Optique Vidéo du CSG – P PIRON
142	Europe's Spaceport	© 2005 ESA-CNES-ARIANESPACE / Optique Vidéo du CSG – JM GUILLON
143	Europe's Spaceport	© 2023 ESA-CNES-ARIANESPACE / Optique Vidéo du CSG – JM GUILLON
144	Europe's Spaceport	© 2021 ESA-CNES-ARIANESPACE / Optique Vidéo du CSG – P BAUDON – E PRIGENT
145	Europe's Spaceport	© 2005 ESA-CNES-ARIANESPACE /photo Optique Vidéo du CSG
145	Europe's Spaceport	© 2005 ESA-CNES-ARIANESPACE /photo Optique Vidéo du CSG
146	Europe's Spaceport	© 2023 ESA-CNES-ARIANESPACE / Optique Vidéo du CSG – P BAUDON
146	Europe's Spaceport	© 2023 ESA-CNES-ARIANESPACE / Optique Vidéo du CSG – P PIRON



Film ESA

Location Portfolio